

St Illtyd's Catholic Primary School



The Governing Body Annual Report

Academic Year 2023-24

St Illtyd's Primary School is a Catholic Voluntary Aided School
in the Diocese of Menevia.

The school caters for the religious, educational, and pastoral
needs of all its pupils.

INTRODUCTION

Dear Parents/Carers

It is with pleasure that I present to you the annual report of the Governing Body of St Illtyd's Primary School.

We are very proud of our position as a Catholic primary school with an excellent reputation locally and amongst our parishes. Due to high standards of learning and high expectations and our focus on well-being, our school remains popular and as a result, we are reaching capacity in most of our year groups.

St Illtyd's is a school where children are taught a broad and balanced curriculum by highly skilled staff and the academic standards are high. However, St Illtyd's is more than this; it is about our Catholic faith that teaches children to follow the example of Jesus, enabling everyone to shine and be proud. We teach the children to have pride in themselves and to work harmoniously with others; it is also a place of acceptance and respect for the beliefs of others and pride in what others do well.

The past year of achievements at St Illtyd's gives great pride to the governors and reflects the tremendous work of all the staff. We are grateful for the continued commitment shown by our school community, we look forward to continuing to work in partnership with you over the next academic year.

Yours faithfully

Keri Purcell

Chair of Governors

October 2023

The Governing Body

Chair: Mr K Purcell
Vice Chair: Ms F Mainwaring
Clerk: Mrs F Rees

The Governors of the school for the academic year 2023 – 24:

Name	Position	Term of Office
Mr K Purcell	Chair & Foundation Governor	25.6.24
Ms F Mainwaring	Vice Chair & Foundation Governor	14.9.25
Mrs N Cooze	Foundation Governor	6.9.25
Fr M Saji	Foundation Governor	24.2.24
Mrs A Warden	Foundation Governor	6.9.23
Vacancy	Foundation Governor	
Vacancy	Foundation Governor	
Vacancy	LA Governor	
Ms J Martin	Parent Governor	17.2.25
Mrs T Parry	Staff Governor	23.10.27
Mrs J Poland	Associate Staff Governor	13.10.24
Mrs M Davies	Headteacher	Ex officio

Clerk to the Governing Body:

Mrs F. Rees

c/o St Illtyd's Primary School, Jersey Rd, Bonymaen, Swansea. SA1 7DG (Tel: 01792 462104)

Chairperson of the Governing Body:

Mr K Purcell

c/o St Illtyd's Primary School, Jersey Rd, Bonymaen, Swansea. SA1 7DG (Tel: 01792 462104)

The Foundation Governors are appointed by the Trustees of the Diocese of Menevia.

The LA Governor is appointed by the City and County of Swansea.

Staffing

Headteacher: Mrs M Davies

Deputy Headteacher: Mrs T Parry

Teaching Staff:

Mr Dalton

Mrs Delaney

Ms Goodwin

Mrs Grenfell

Mrs Hickson

Mr Lewis

Mrs Lynch

Mrs Mowbray-Rees

Mrs Saer

Teaching Assistants:

Mrs Betts

Mrs Davies

Mrs Davies

Mrs Hopkins

Miss Membury

Mrs Poland

Mrs St John

Mrs Staddon

Mrs White

Mrs Williams

Administration:

Administration Officer: Mrs Rees

Premises Manager: Mr Shannon

Additional Provision:

Breakfast Club

Cook: Ms Mann

Kitchen Assistant: Ms Duffy

Supervisory Assistant: Mrs Betts

Supervisory Assistant: Mrs Russ

Lunchtime

Cook: Mrs Mann

Kitchen Assistant: Mrs Russ

Kitchen Assistant: Ms Thomas

Supervisory Assistant: Mrs Betts

Supervisory Assistant: Mrs Duffy

Supervisory Assistant: Mrs John

Supervisory Assistant: Mrs Poland

Supervisory Assistant: Mrs White

Wraparound

Leader: Ms Goodwin

Support Assistant: Mrs Davies

Term Dates for 2023-2024

		Half Term Holidays		
Term	Term begins	Begins	Ends	Term ends
Autumn 2023	Friday 1 st September	Monday 30 th October	Friday 3 rd December	Friday 22 nd December
Spring 2024	Monday 8 th January	Monday 12 th February	Friday 16 th February	Friday 22 nd March
Summer 2024	Monday 8 th April	Monday 27 th May	Friday 31 st May	Friday 19 th July

INSET Days

Friday 1st September 2023

Monday 4th September 2023

Monday 6th November 2023

Friday 9th February 2024

Monday 8th April 2024

*One INSET day to be allocated

Bank Holidays 2024

29 th March	Good Friday
1 st April	Easter Monday
6 th May	May Day
27 th May	Spring Bank Holiday

Please note that this calendar is subject to any changes that may arise as a result of Welsh Government issuing a directive on term dates.

The City and County of Swansea does not accept any liability for any losses incurred in respect of altered holiday arrangements following changes to the timetable in any direction issued by the Welsh Government.

Review of School Policies

There is a continuous process of review of school policies, and these can be viewed on the school website.

General School Matters

Attendance

Attendance % from 1st September 2022 to 24th July 2023 was 91%

Half termly breakdown

Autumn Term 2022	90.5
Spring Term 2023	92.7
Summer Term 2023	90

Finance

SCHOOL: St Illtyds RC Primary

STATEMENT OF ACTUAL EXPENDITURE 2022/23 FINANCIAL YEAR

	Delegated Expenditure £	Non-Delegated Expenditure £
Teachers Salaries	598,310	
Salaries	258,788	19,081
Other Employee Costs	-333	
Premises	28,816	
Transport	876	52,773
Supplies & Services	158,011	
Recharges	83,932	
Gross Expenditure	1,128,401	71,854
Grant Income	-214,525	
Other Income	-81,138	
Gross Income	-295,662	0
Net Expenditure	832,739	71,854

RESERVES:	£
FINAL FORMULA ALLOCATION:	802,443
TOTAL NET EXPENDITURE:	832,739
TRANSFER TO / (FROM) RESERVES:	-30,296
OPENING BALANCE ON RESERVES 01/04/22	157,638
CLOSING BALANCE ON RESERVES: 31/03/23	127,342

Inspection

Progress on the Post Inspection Action Plan Estyn inspection June 2015:

Recommendation	Progress
R1 Improve the level of challenge for more able pupils in the Foundation Phase	Effective processes are in place to identify and track the progress of more able pupils in the Foundation Phase. The school has appointed a co-coordinator for more able and talented pupils who monitors their progress carefully through detailed analysis of performance data and scrutiny of teachers' planning and pupils' work.
R2 Make sure that staff implement the principles of the Foundation Phase fully, particularly in providing opportunities for children to learn independently	Staff have improved the provision for the Foundation Phase. New resources, such as sand and water trays, outdoor sheds for role play, and investigation areas have improved opportunities for pupils to experiment and to learn in fun, engaging and practical ways.
R3 Make sure that assessment procedures are streamlined to enable teachers to make more effective use of assessment information	The school has undertaken a thorough review of its assessment practices and has reduced appropriately the number and range of standardised tests it uses. The focus is now on establishing rigorous and consistent teacher assessment across the school.
R4 Improve the quality and consistency of marking and feedback to pupils to ensure that they understand what they need to do to improve their work	The school has revised its marking and feedback policy appropriately. Teachers now give pupils clear indications of the positive features of their work and those aspects they need to improve. There is regular scrutiny of pupils' work to monitor how well teachers implement the new procedures. As a result of purposeful feedback, the quality of teachers' marking is more consistent and pupils respond better to comments from the teacher than at the start of the year.
R5 Establish robust systems for self-evaluation and link the outcomes more closely to priorities within the school improvement plan	Self-evaluation processes are now clear and coherent. Senior leaders evaluate the school's performance carefully and share the findings effectively with staff and the governing body. The self-evaluation review is honest and sets out an accurate view of the school's strengths and areas for development. The review links strongly to the priorities in the school improvement plan. The plan has clear success criteria and suitable timescales for action.

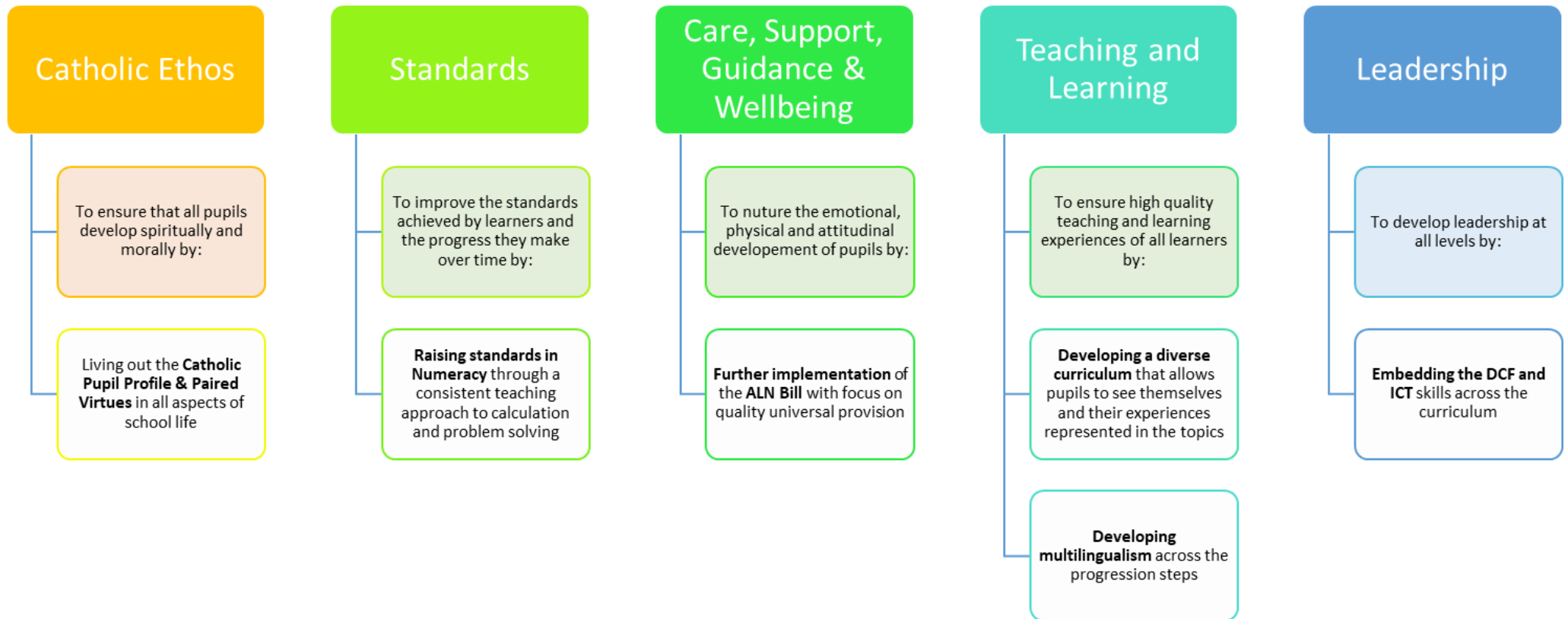
Prospectus

The school prospectus is updated annually in accordance with the guidance received from the Welsh Government.

This year the following amendments have been made:

- Updated statistical data
- Changes in the composition of the school staff and Governing Body
- Update to the admission arrangements

School Development Plan



Curriculum Developments

Curriculum for Wales

The school strives to keep up to date with an ever-changing curriculum. Staff have started to deliver the new curriculum for Wales, “Successful Futures”. Alongside this, staff are continuing to prepare for full delivery moving forward.

Children are taught in age-appropriate classes, with teachers utilising a range of teaching methods and styles to meet the needs of all learners. Children are taught as a whole class, small group and individually at different times depending on the task and nature of the lesson. (See below for provision for children with Additional Learning Needs.)

Curriculum Provision

Additional Learning Needs

The school has a written policy for Additional Learning Needs (ALN) with clearly documented procedures which comply with the new ALN Code of Practice for Wales. The procedures are clearly understood and implemented by all staff. Staff make use of the support and advice given by the LEA’s Access to Learning Team. The school is currently reviewing its policy and developing activities to support the more able pupils. Individual Development Plans are in place for those pupils who require additional support. Universal provision has been implemented to support staff with pupils who have specific learning needs.

As ALNCO Mrs Parry works closely with staff to provide support to pupils identified as having additional learning needs.

Admission Arrangements for pupils with disabilities

Pupils with disabilities will be subject to the normal admission procedures. Whenever possible, adaptations will be made to the school site in order to accommodate pupils with physical disabilities. The Governing Body has considered the implications of the Disability Discrimination Act and, after liaising with the LA, will respond as appropriate as individual circumstances dictate. The school has a Strategic Equality Plan, which is updated regularly.

Language Category

English is the language used to deliver the vast majority of the curriculum, but we recognise that our school is comprised of a diverse community, with a number of different languages being spoken at home. The rich cultures, heritages and languages are celebrated as far as is possible within our school context.

Welsh Provision

The school encourages the use of everyday incidental Welsh. Welsh is taught as a subject throughout the school. Our St. David’s Day Concert and subsequent churning ceremony is a celebration of the language and culture of Wales. The school has regular visits from Welsh advisory staff who support the school with the use of Welsh in the classroom. The school has achieved the bronze Siarter Iaith and is now undertaking the silver award for the Siarter Iaith.

Extra-curricular Provision

Extra-curricular Activities

Extra-curricular activities and opportunities available to our pupils include:

Athletics, Art, Board Game Club, Dance, Football, Lego, Netball and Rugby.

Pupil voice has been strong through the School Ambassadors, Eco-Council, Mini Vinnies, Criw Cymraeg and more recently the Digital Leaders.

Residential visits to Brecon are planned for pupils in Year 6.

A variety of visits to historical, scientific and geographical locations were undertaken which supported the wider learning for all pupils across all year groups.

Seasonal Services

All pupils participated in the school Christmas Service, Easter Service and Class Assemblies last year.

Parents will continue to be invited to all our performances and services this academic year.

Our school choir performed at many community venues and will be part of the Bishop Vaughan Cluster Carol Service at the Cathedral this year.

Sports

Sport continues to play an important part in the life of our school with a number of pupils achieving success in a variety of areas.

Our school recognises the skills of children outside of school in a wide variety of sports and activities. These are celebrated in assemblies and on our talent boards.

Sporting Clubs include: Athletics, Dance, Football, Gymnastics, Karate, Multi-Sports, Netball and Rugby

The Governors would like to thank all members of staff for providing these activities which enrich the curriculum for our pupils.

Links with the Community

Community Links

St Illtyd's Primary School continues to be actively involved in the local and wider community. The children benefit greatly from visits from local Clergy, Police and Fire Officers, Historians, Road Safety team members, musicians and local artists.

The ethos of the school is extended through our support of various charities. Our pupils and staff put faith into action through raising awareness and fundraising for a number of worthy causes. Fund raising events over the last year have included Children in Need, Mission Together (MISSIO), Save the Children, NSPCC and CAFOD.

The school has good links with the Police and our local PCSO. We work closely on aspects such as safety and good citizenship.

The school has good links with Bishop Vaughan Catholic Comprehensive School and the Catholic cluster of schools. Regular liaison meetings are held and a programme of visits to the school is provided for Year 6 pupils prior to transition.

Parents, Teachers and Friends of St Illtyd's (PTFA)

The school has an active Parents, Teachers and Friends Association. During the last academic year, the PTFA organised a number of successful events. Funds raised from events will be used towards extending and increasing the opportunities and provision for children beyond that which is provided through the school budget.

Many thanks go to all the PTFA members who have supported the school this year. We are now looking forward to the exciting events they have planned for the next academic year.

Practical Provision

Buildings and Premises

Pupils are accommodated in one large building across two wings.

Nursery to Year 2 pupils are taught in classrooms on the ground level while Years 3,4 & 5 pupils are taught on the lower ground level. Year 6 are on the first floor of the building.

Nursery have their own unisex toilets as do Reception.

There are separate boys and girls toilets for years 1 and 2. These three blocks of toilets are accessible directly from the classroom.

Years 3 & 4 have their own toilets for boys and girls, close to their classrooms, and years 5 & 6 have their own toilets for boys and girls.

Cleaning of the school building and premises is managed through the Local Authority cleaning services.

Healthy Lifestyles

The school promotes healthy eating and is currently working towards phase 7 of the healthy school award.

Parents are regularly reminded that we are a healthy school and children should bring a healthy packed lunch to school.

Fizzy drinks and sweets are not permitted in school.

Water is available via water fountain and children are encouraged to drink water throughout the day.

There is an extensive range of activities available to the children, which encourage pupils to be healthy and active, in relation to both physical and emotional health.