

St Illtyd's Catholic Primary School



The Governing Body Annual Report

Academic Year 2024-25

St Illtyd's Primary School is a Catholic Voluntary Aided School
in the Diocese of Menevia.

The school caters for the religious, educational, and pastoral
needs of all its pupils.

INTRODUCTION

Dear Parents/Carers

It is with pleasure that I present to you the annual report of the Governing Body of St Illtyd's Primary School.

We are very proud of our position as a Catholic primary school with an excellent reputation locally and amongst our parishes. Due to high standards of learning and high expectations and our focus on well-being, our school remains popular and as a result, we are reaching capacity in most of our year groups.

St Illtyd's is a school where children are taught a broad and balanced curriculum by highly skilled staff and the academic standards are high. However, St Illtyd's is more than this; it is about our Catholic faith that teaches children to follow the example of Jesus, enabling everyone to shine and be proud. We teach the children to have pride in themselves and to work harmoniously with others; it is also a place of acceptance and respect for the beliefs of others and pride in what others do well.

The past year of achievements at St Illtyd's gives great pride to the governors and reflects the tremendous work of all the staff. We are grateful for the continued commitment shown by our school community, we look forward to continuing to work in partnership with you over the next academic year.

Yours faithfully

Keri Purcell

Chair of Governors

October 2024

The Governing Body

Chair: Mr K Purcell
Vice Chair: Ms F Mainwaring
Clerk: Mrs F Rees

The Governors of the school for the academic year 2024 – 25:

Name	Position	Term of Office
Mr K Purcell	Chair & Foundation Governor	25.6.24
Ms F Mainwaring	Vice Chair & Foundation Governor	14.9.25
Fr R Davies	Foundation Governor	24.2.24
Mrs N Cooze	Foundation Governor	6.9.23
Vacancy	Foundation Governor	
Vacancy	Foundation Governor	
Vacancy	Foundation Governor	
Vacancy	LA Governor	
Ms J Martin	Parent Governor	17.2.25
Mrs T Parry	Staff Governor	23.10.27
Mrs J Poland	Associate Staff Governor	13.10.24
Mrs M Davies	Headteacher	Ex officio

Clerk to the Governing Body:

Mrs F. Rees

c/o St Illtyd's Primary School, Jersey Rd, Bonymaen, Swansea. SA1 7DG (Tel: 01792 462104)

Chairperson of the Governing Body:

Mr K Purcell

c/o St Illtyd's Primary School, Jersey Rd, Bonymaen, Swansea. SA1 7DG (Tel: 01792 462104)

The Foundation Governors are appointed by the Trustees of the Diocese of Menevia.

The LA Governor is appointed by the City and County of Swansea.

Staffing

Headteacher: Mrs M Davies

Deputy Headteacher: Mrs T Parry

Teaching Staff:

Ms Betts

Mr Dalton

Mrs Delaney

Ms Goodwin

Mrs Grenfell

Mrs Hickson

Mr Lewis

Mrs Lynch

Mrs Mowberry-Rees

Mrs Saer

Teaching Assistants:

Mrs Betts

Mrs Davies

Mrs Davies

Mrs Hopkins

Mrs Membury

Mrs Poland

Mrs St John

Mrs White

Mrs Williams

Administration:

Administration Officer: Mrs Rees

Premises Manager: Mr Shannon

Additional Provision:

Breakfast Club

Cook:	Ms Russ
Kitchen Assistant:	Ms Duffy
Supervisory Assistant:	Mrs Betts
Supervisory Assistant:	Mrs Russ

Lunchtime

Cook:	Ms Russ
Kitchen Assistant:	Mrs Mann

Supervisory Assistant:	Mrs Betts
Supervisory Assistant:	Mrs John
Supervisory Assistant:	Mrs Poland
Supervisory Assistant:	Mrs White

Wraparound

Leader:	Ms Stevens
Support Assistant:	Mrs Betts

School Term and holiday dates 2024/2025							
Term							
Term begins							
Mid-term Holiday				Mid-term holiday ends		Terms ends	Total days
Autumn 2024	Monday 2 September 2024	Friday 25 October 2024	Monday 28 October 2024	Friday 1 November 2024	Monday 4 November 2024	Friday 20 December 2024	75
Spring 2025	Monday 6 January 2025	Friday 21 February 2025	Monday 24 February 2025	Friday 28 February 2025	Monday 3 March 2025	Friday 11 April 2025	65
Summer 2025	Monday 28 April 2025	Friday 23 May 2025	Monday 26 May 2025	Friday 30 May 2025	Monday 2 June 2025	Monday 21 July 2025	55
Total							195

INSET Days

INSET day –

Monday September 2nd, Tuesday 3rd September 2024,
Monday 3rd March, Monday 2nd June,

Monday July 21st 2025

*One INSET day to be allocated

Bank Holidays 2024

29th March Good Friday
1st April Easter Monday
6th May May Day
27th May Spring Bank Holiday

Please note that this calendar is subject to any changes that may arise as a result of Welsh Government issuing a directive on term dates.

The City and County of Swansea does not accept any liability for any losses incurred in respect of altered holiday arrangements following changes to the timetable in any direction issued by the Welsh Government.

Review of School Policies

There is a continuous process of review of school policies, and these can be viewed on the school website.

General School Matters

Attendance

Attendance % from 1st September 2023 to 24th July 2023 was 91.9%

Half termly breakdown

Autumn Term 2023	92.8 %
Spring Term 2024	90.3 %
Summer Term 2024	91.4 %

Finance

SCHOOL: St Illtyds RC Primary

STATEMENT OF ACTUAL EXPENDITURE 2023/24 FINANCIAL YEAR

	Delegated Expenditure £	Non-Delegated Expenditure £	Total Net Expenditure £
Teachers Salaries	614,621	0	614,621
Salaries	276,290.62	15,341	291,632
Other Employee Costs	-153.65	380	226
Premises	45,083.60	0	45,084
Transport	2,284.06	91,746	94,030
Supplies & Services	124,470.17	0	124,470
Recharges	91,448		91,448
Gross Expenditure	1,154,044	107,467	1,261,511

<i>Grant Income</i>	-193,309	0	-193,309
<i>Other Income</i>	-103,488	0	-103,488
<i>Gross Income</i>	-296,797	0	-296,797
<i>Net Expenditure</i>	857,247	107,467	964,714

RESERVES:	£
FINAL FORMULA ALLOCATION:	857,572
TOTAL NET EXPENDITURE:	857,247
TRANSFER TO / (FROM) RESERVES:	325
OPENING BALANCE ON RESERVES 01/04/23	127,342
CLOSING BALANCE ON RESERVES: 31/03/24	127,667

Inspection

Progress on the Post Inspection Action Plan Estyn Inspection December 2023 :

Recommendation	Progress
R1 Improve pupils' Welsh speaking skills	The Welsh Lead will work closely with the Welsh advisory service to help the school promote oracy across the school. An action plan will be devised in order to support the progress of this recommendation. Oracy is on our school development plan this year and as a cluster we have joined Voice 21 approach to developing Oracy. These strategies will be applied to how we evolve with our Welsh Oracy skills.
R2 Ensure that learning experiences enable all pupils to improve their creativity and problem-solving skills and to develop as independent learners	This recommendation is on our school development plan for this year. The staff will be rewriting the teaching and learning policy which will specifically highlight how we ensure we teach vital skills to improve creativity, problem solving as well as promote independent learning across the school. A training programme is in place to support teachers with developing vital skills and strategies.

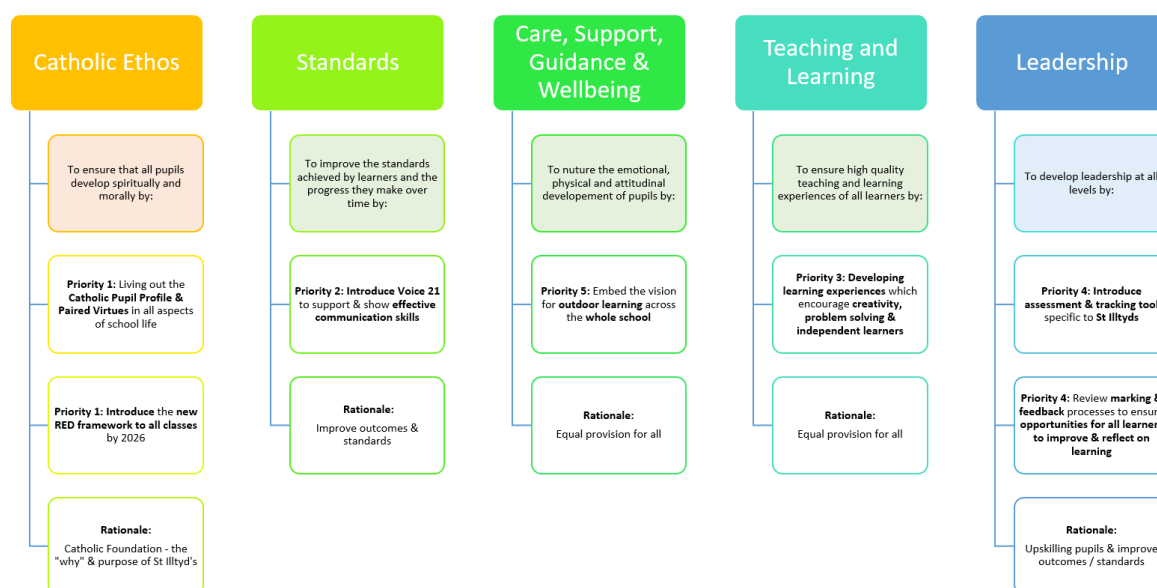
Prospectus

The school prospectus is updated annually in accordance with the guidance received from the Welsh Government.

This year the following amendments have been made:

- Updated statistical data
- Changes in the composition of the school staff and Governing Body
- Update to the admission arrangements

School Development Plan



Curriculum Developments

Curriculum for Wales

The school strives to keep up to date with an ever-changing curriculum. Staff have started to deliver the new curriculum for Wales, "Successful Futures". Alongside this, staff are continuing to prepare for full delivery moving forward.

Children are taught in age-appropriate classes, with teachers utilising a range of teaching methods and styles to meet the needs of all learners. Children are taught as a whole class, small group and individually at different times depending on the task and nature of the lesson. (See below for provision for children with Additional Learning Needs.)

Curriculum Provision

Additional Learning Needs

The school has a written policy for Additional Learning Needs (ALN) with clearly documented procedures which comply with the new ALN Code of Practice for Wales. The procedures are clearly understood and implemented by all staff. Staff make use of the support and advice given by the LEA's Access to Learning Team. The school is currently reviewing its policy and developing activities to support the more able pupils. Individual Development Plans are in place for those pupils who require additional support. Universal provision has been implemented to support staff with pupils who have specific learning needs.

As ALNCO Mrs Parry works closely with staff to provide support to pupils identified as having additional learning needs.

Admission Arrangements for pupils with disabilities

Pupils with disabilities will be subject to the normal admission procedures. Whenever possible, adaptations will be made to the school site in order to accommodate pupils with physical disabilities. The Governing Body has considered the implications of the Disability Discrimination Act and, after liaising with the LA, will respond as appropriate as individual circumstances dictate. The school has a Strategic Equality Plan, which is updated regularly.

Language Category

English is the language used to deliver the vast majority of the curriculum, but we recognise that our school is comprised of a diverse community, with a number of different languages being spoken at home. The rich cultures, heritages and languages are celebrated as far as is possible within our school context.

Welsh Provision

The school encourages the use of everyday incidental Welsh. Welsh is taught as a subject throughout the school. Our St. David's Day Concert and subsequent charring ceremony is a celebration of the language and culture of Wales. The school has regular visits from Welsh advisory staff who support the school with the use of Welsh in the classroom. The school has achieved the bronze Siarter Iaith and is now undertaking the silver award for the Siarter Iaith.

Extra-curricular Provision

Extra-curricular Activities

Extra-curricular activities and opportunities available to our pupils include:

Athletics, Art, Board Game Club, Dance, Football, Lego, Netball and Rugby.

Pupil voice has been strong through the School Ambassadors, Eco-Council, Mini Vinnies, Criw Cymraeg and more recently the Digital Leaders.

Residential visits to Brecon are planned for pupils in Year 6. We have also planned a residential visit for our Year 4 pupils who will be visiting Llangrannog during this academic year.

A variety of visits to historical, scientific and geographical locations were undertaken which supported the wider learning for all pupils across all year groups.

Seasonal Events

All pupils participated in the school Christmas Service, Easter Service and Class Assemblies last year.

Parents will continue to be invited to all our performances and services this academic year. Our school choir performed at many community venues and will be part of the Bishop Vaughan Cluster Carol Service at the Cathedral this year. This was such a success that we have decided to make this an annual event in our school diary.

Sports

Sport continues to play an important part in the life of our school with a number of pupils achieving success in a variety of areas.

Our school recognises the skills of children outside of school in a wide variety of sports and activities. These are celebrated in assemblies and on our talent boards.

Sporting Clubs include: Athletics, Dance, Football, Gymnastics, Karate, Multi-Sports, Netball and Rugby

The Governors would like to thank all members of staff for providing these activities which enrich the curriculum for our pupils.

Links with the Community

Community Links

St Illtyd's Primary School continues to be actively involved in the local and wider community. The children benefit greatly from visits from local Clergy, Police and Fire Officers, Historians, Road Safety team members, musicians and local artists.

The ethos of the school is extended through our support of various charities. Our pupils and staff put faith into action through raising awareness and fundraising for a number of worthy causes. Fund raising events over the last year have included Children in Need, Mission Together (MISSIO), Save the Children, NSPCC and CAFOD. The school also donates food to the local food bank throughout the year, through their Harvest and Lenten collections.

The school has good links with the Police and our local PCSO. We work closely on aspects such as safety and good citizenship.

The school has good links with Bishop Vaughan Catholic Comprehensive School and the Catholic cluster of schools. Regular liaison meetings are held and a programme of visits to the school is provided for Year 6 pupils prior to transition. This year we have trialled transition activities for Year 4 & 5 and they have been extremely successful. This will continue moving forward into the next academic year.

Parents, Teachers and Friends of St Illtyd's (PTFA)

The school has an active Parents, Teachers and Friends Association. During the last academic year the PTFA organised a number of successful events. Funds raised from events will be used towards extending and increasing the opportunities and provision for children beyond that which is provided through the school budget.

Many thanks go to all the PTFA members who have supported the school this year. We are now looking forward to the exciting events they have planned for the next academic year.

Practical Provision

Buildings and Premises

Pupils are accommodated in one large building across two wings.

Nursery to Year 2 pupils are taught in classrooms on the ground level while Years 3,4 & 5 pupils are taught on the lower ground level. Year 6 are on the first floor of the building.

Nursery have their own unisex toilets as do Reception.

There are separate boys and girls toilets for years 1 and 2. These three blocks of toilets are accessible directly from the classroom.

Years 3 & 4 have their own toilets for boys and girls, close to their classrooms, and years 5 & 6 have their own toilets for boys and girls.

Cleaning of the school building and premises is managed through the Local Authority cleaning services.

Healthy Lifestyles

The school promotes healthy eating and is currently working towards phase 7 of the healthy school award.

Parents are regularly reminded that we are a healthy school and children should bring a healthy packed lunch to school.

Fizzy drinks and sweets are not permitted in school.

Water is available via water fountain and children are encouraged to drink water throughout the day.

There is an extensive range of activities available to the children, which encourage pupils to be healthy and active, in relation to both physical and emotional health.